



 Presari
Digital Hiker's Guide to

Oregon

Paul J. Krupin

Attention Please! Important Instructions!

This eBook utilizes Presari -- a specialized search tool that lets you choose where you get information from on the Internet.

This is an interactive eBook - an eLearning search tool that searches the Internet for you.

Presari operates like a TV remote control for search engines.

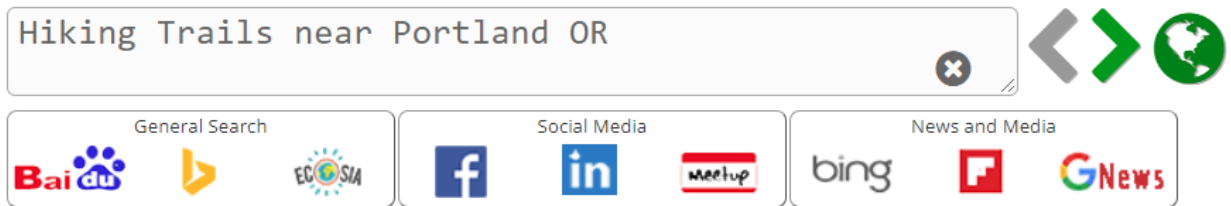
The keywords are ready to use. No typing is needed.

Every destination link opens a Presari page just like this one:

[Hiking Trails near Portland OR](#)

Hiking Trails near Portland OR *Shared on 01/02/2021*

Custom Search using Hiking Group in Outdoors - Hiking & Travel Preset 



You get to choose: General Search engines, social media, news search engines and much more.

Choice is power. Knowledge creates opportunity. That is the miracle of this technology that is at your fingertips.

Click or touch. That's all you need to do.

Get ready. You are about to go on an incredible elearning adventure.

Digital Hikers Guide to Oregon

Contents	iii
Introduction	1
<i>What is Presari?</i>	1
<i>Speed up your online research.</i>	1
<i>Using this Guide is Easy</i>	2
<i>Get the Most Out of Your Technology</i>	3
<i>Use the Tools</i>	3
<i>Which is Better Google or Bing?</i>	4
<i>Get Hiking Trail Maps with CalTopo</i>	6
<i>Expanding Your Knowledge</i>	7
The Digital Hiker's Guide to Oregon	8
<i>Statewide Perspective</i>	8
<i>Northern Coast</i>	9
<i>Portland</i>	14
<i>Columbia Gorge</i>	18
<i>Northeastern</i>	22
<i>Willamette Valley</i>	27
<i>Central Oregon</i>	32
<i>Southern Coast</i>	36
<i>Southern Oregon</i>	39
<i>South Central/Southeastern</i>	43
About the Creator	49
<i>How Presari Was Created</i>	49

<i>Copyright Page</i>	57
<i>Acknowledgements</i>	58
<i>Please Tell Me What You Think!</i>	60

What is Presari?

This ebook utilizes a Presari a specialized search tool that lets you choose where you get information from on the Internet.

This is an ebook that searches the Internet for you.


No typing is needed. Just click or touch.

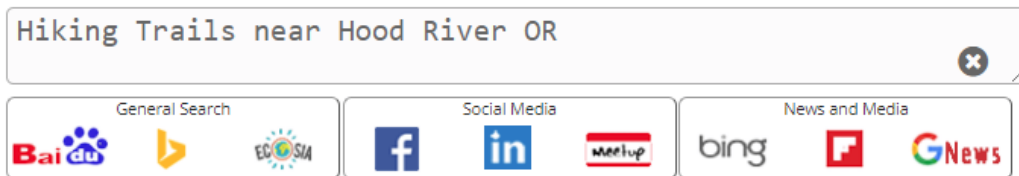
Presari operates like a TV remote control for search engines.

You click or touch a keyword a like this:

[Hiking Trails near Hood River OR](#)

Hiking Trails near Hood River OR *Shared on 01/02/2021*

Custom Search using [Hiking Group](#) in [Outdoors - Hiking & Travel](#) Preset 



You can see three categories of choices:

- Social Media - Facebook, Instagram, Twitter, LinkedIn and more.
- News Media - Google news, Bing News, prime news media and more.

Click or touch a search engine icon, and your results open for you. Voila.

Now you can always pick Google or Bing to deliver you information. You can also select other sources of information depending on what you want.

Speed up your online research.

You can go really fast if you want to.

Try this: Hold down the Command Key (“Command + Click” on a Mac) or the Control Key (“Control + Click” on a PC) while you click or touch one source icon after another. Like magic - they will all open. This helps you speed up your research with no extra typing. Having choice is nice. And you can zoom.

The name Presari comes from the word “impresario” – the person who presents art, science, music – to the public. I define the word Presari to mean “knowledge creates opportunity”.

Presari’s overriding purpose is to present to you the best knowledge, news and people fast, so you can get the most out of your technology and your time.

Words matter. Keywords have power. Knowledge creates opportunity.

You know the power of one good search. You can buy a pizza, watch a video, find help with a problem or find a trail map to go on a hike, even get life-saving information. It can be magic.

This digital guide contains the search words you need. The multi-word keywords are ready to use. You can select the most current search results from the Internet, in real time, from anywhere on your computer, your laptop, or your smart phone.

No typing is needed. Just click or touch.

Using this Guide is Easy

You have miracle technology at your fingertips. This ebook helps you get the most out of it.

Get online. You can use a computer, a laptop, notebook or your smart phone in either a PDF file or Kindle as long as you can read the file and are connected to the Internet.

Open this ebook. Look at the Table of Contents.

Swipe or scroll. Pick a destination. Click or touch an icon.

Learn. Unlearn. Relearn.

Make a plan. Take action. Improve everything.

Enjoy your life. Share the joy. Repeat.

No typing is needed. The destination keywords are organized and arranged for you by region in the Table of contents.

Step 1: From the Table of Contents, click or touch the type of destination or the region you are interested in. The right page in the digital guide then opens up.

Step 2. Click or touch any desired destination and Presari opens up.

Step 3: Click or touch a search engine icon and your results open up.

This guide is organized by the types of Federal and State Managed designations, then by city and county and other outdoor recreation topics, within each region. These include:

- Statewide Perspective
- National Parks
- National Monuments

- National Forests
- National Wilderness Areas
- National Recreation Areas
- National Wildlife Refuges
- National Wild & Scenic Rivers
- National Scenic Highways, Rivers, and Trails,
- State Parks, State Forests, State Wildlife Areas, State Recreation Areas
- Parks and Hiking Trails near the Major Cities & by County
- Hiking Trails near Mountain Passes and Mountain Peaks
- Snowshoeing, Cross-Country Skiing and Sno-Parks
- Hiking Clubs
- ADA Accessible Parks, Hiking Trails, Camping and Fishing
- CalTopo Maps

Adjacent hiking destinations in nearby areas in Oregon and Idaho are included.

The key word “hiking trails” were added to the search queries and then carefully tested to make sure they deliver appropriate results.

Bottom line: Click or touch a destination, then click or touch a search engine icon.

Get the Most Out of Your Technology

Choose the Source of Information

For every destination in this guide Presari lets you select where you get information from. You can choose the source to satisfy your particular need for information. You can quickly search:

General Search - Google, Bing, Wikipedia, others – the results are different and you will find that some are better than others. Each search engine offers different results.

Social Media - Find what people are saying with Facebook, Twitter, You Tube, LinkedIn, and other social media. You can see the history of posts as well as in real time.

News Media - Find the latest media coverage with Google News and Bing News and newspapers, magazines, news services & syndicates, radio shows, TV shows, and news and other websites, blogs, and podcasts. You can also select media from all over the nation and even from all over the world.

Use the Tools

Search engines have created numerous tools to help you refine the results you get.

You can refine your results so that you learn the way you prefer to learn. The navigation menu lets you select articles, images, video, and much more.

You can also use the time tools, to filter the results so that the results you see cover the time period you seek. This can be the past year, month, past 24 hours, or any time frame you choose.

Each search engine has different tools.

Some social media have tools that allow you to refine your results by the type of posts, by location, by time, and other ways.

Facebook and LinkedIn have tools that let you identify the groups and organizations.

Which is Better Google or Bing?

As you search, pay close attention to the differences in the results delivered by the different search engines.

In some areas Google really shines. You can find curated articles by travel writers from sites like Trip Advisor, travel magazines, and local experts.

In other keyword topics, particularly for travel, Bing has developed special interactive tools that Google does not offer. The Google Map and results tends to show the local parks and contains less specific hiking trail locations, descriptions and other trail and travel related information. Bing really shines with the results it delivers for parks and outdoor recreation, and other travel destination search efforts.

[Hiking Trails near Portland OR \(Bing Maps\)](#)

Microsoft Bing Hiking Trails near Portland OR

ALL IMAGES VIDEOS MAPS NEWS SHOPPING MORE

Local results for Hiking trails near portland or [Larger map](#) Best Match All Difficulties Hiking All Lengths All ratings All Distances [Compare](#)

<p>Wildwood Trail ★★★★★ Hard 30 mi - 3,973 ft</p>	<p>Marquam Trail to Council Crest Hike Trail ★★★★★ Moderate 3.30 mi - 787 ft</p>	<p>Lower Macleay Park to Pittock Mansion ★★★★★ Moderate 5.30 mi - 964 ft</p>	<p>Tryon Creek State Park Trail ★★★★★ Easy 2.10 mi - 354 ft - 2 hrs</p>	<p>Hoyt Arboretum Trails ★★★★★ Easy 1.50 mi - 269 ft - 1 hr</p>	<p>Angels Rest Loop Trail ★★★★★ Hard 9.70 mi - 3,553 ft</p>	<p>Mount Tabor Loop Trail ★★★★★ Easy 1.70 mi - 272 ft - 30 mins</p>
--	---	---	--	--	--	--

Hiking Trails in Portland

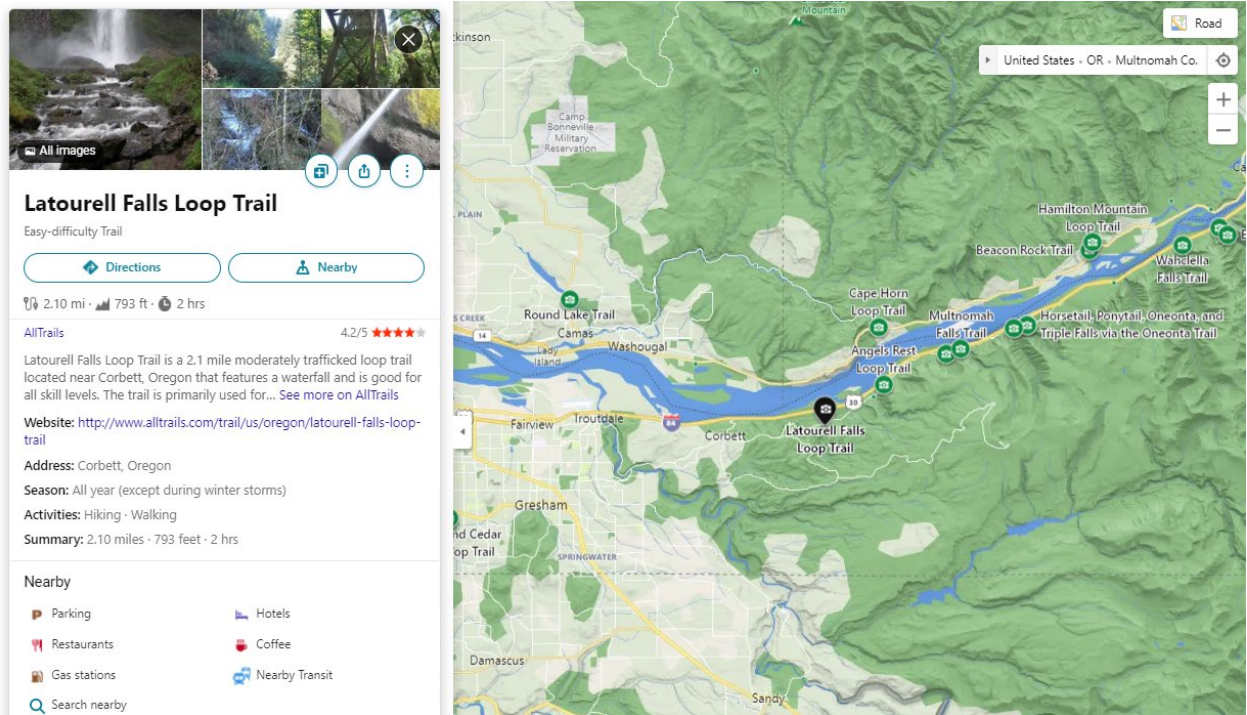
1. Forest Park. Awesome spot to take a short hike or a long hike it feels like you're in the wilderness but you're right within city ...
2. Willamette River Walkway
3. Powell Butte Nature Park
4. Portland 4T Trail
5. Wildwood Trail. What a great hike & it is right in our back yard.
6. Lelf Erickson Trail
7. Eagle Creek Trail Park
8. West Delta Park
9. Forty-Mile Loop.

Reference: www.tripadvisor.com/Attractions-g52024-Activities-c61-187-Portland,Oregon.html

The Bing Interactive Maps are way better for hikers compared to Google. The Bing Interactive map is a digital hiker's guide that with interactive dynamic map capabilities that offer photos and trail

information. The selections you make in the drop-down filters change the destinations that are revealed on the dynamic map.

The Bing Map is a dynamic interactive map with filter drop downs and links to trail maps, and much more.



You will need to recognize that not everything on the Internet is free. Google and Bing link to websites that may charge for access to their maps and information. Signing up and becoming a member will be required at hiking trail web sites like AllTrails, Gaia, NatureAtlas, TrailLink and others for you to get full access to the detailed maps and tools that are available on their sites.

The Bing Map is a dynamic with filter drop downs and links to trail maps, and much more. One Click, Two Clicks, Three Clicks, More

You know that Internet has answers to your questions. But finding the right information in a vast ever-changing universe of information can be challenging. You can get led astray if you don't know where you are going or get distracted along the way.

In this guide, you can usually get to the most helpful information within three to four clicks.

Get Hiking Trail Maps with CalTopo

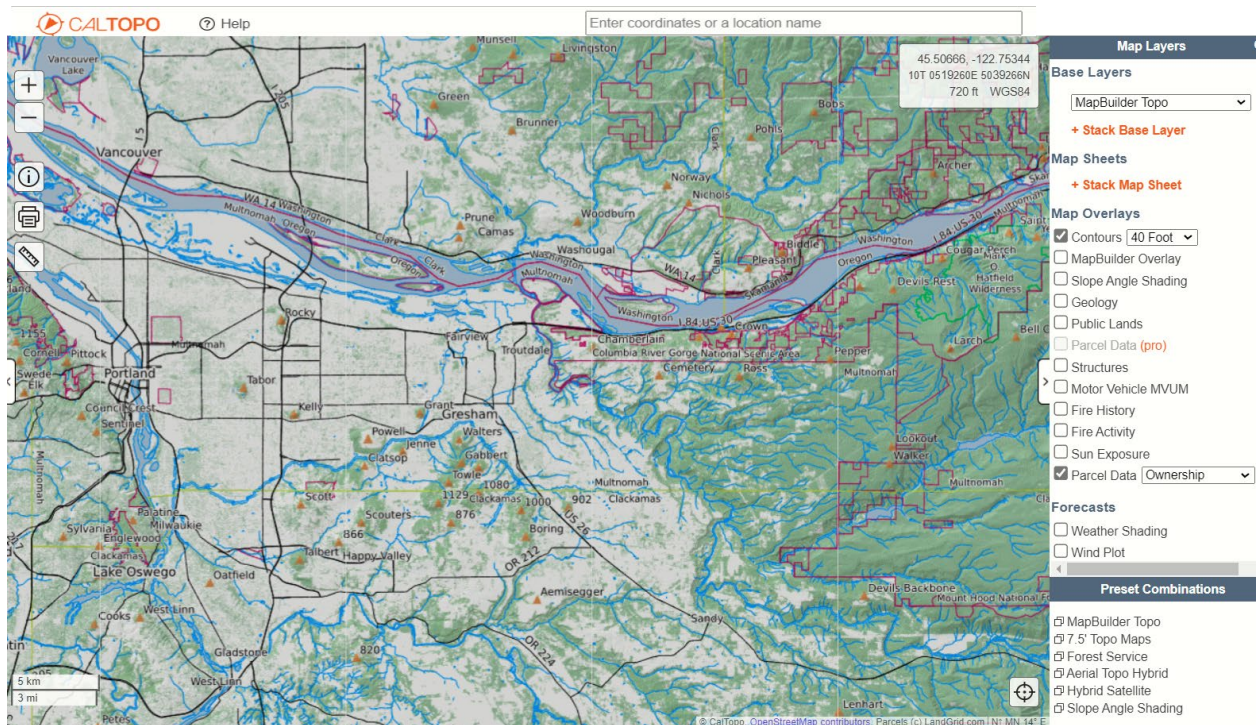
Caltopo is a truly remarkable interactive website that allows you to quickly and easily create unique customized maps to meet your needs. With Caltopo you can pick and choose the map layers you want from an amazing array of map resources.

This guide contains Presari links that offer results that place you right on CalTopo maps.

CalTopo in Oregon

Once you get to on any CalTopo map, you can drag and zoom the map to wherever you want to really focus on. You can also then tailor the map and select from a number of trail maps, federal government maps, aerial photos, slope angles, weather, geology, and many other layers of data.

If you need a really detailed map of another specific location, you can also add the keyword “CalTopo” to any named location and then do your search at Google or Bing. The CalTopo linked site should be on the first page of the results near the top. The Google results also list numerous CalTopo maps that have been created and uploaded by users.



How to Use Caltopo

Expanding Your Knowledge

This guide can be used as a launching pad to open up the doors to knowledge on anything you are interested in. Here are some useful techniques that can help you continue your research.

Modify the Keywords

From every Presari search page, when you click or touch a search engine icon, you will see the keywords are loaded directly into the search page of the website you chose.

You can add, to, modify or trade out any of the keywords yourself.

You can change the location, from Mount Rainier National Park to any other location.

You can change out the words Hiking Trails to any particular topic you are interested in:

Here are just some options for you to play with:

Biology, botany, ecology, geology, geology maps, geography, geomorphology, cultural resources, history, plants, wildlife, waterfalls, photography, swimming holes, best places to watch the sunrise, best places to watch the sunset, and anything else you can think of.

You can do this on any search page you are located on.

With a Presari membership, you can modify the keywords on the Presari page and avoid retying on other search engines.

Hit the Home Page Buttons

Once you land on any website, you can always click on that sites home page button. This lets you see everything they have available. If you like what you see, and are interested in what they offer, delve in. Enjoy what they offer and indulge yourself.

Share the Presari Page

There is a share button on every Presari page that allows you to send the page to anyone you want by email, or social media.

This allows you to give the gift of knowledge to anyone who needs the help or can benefit from the information you have at your fingertips.

Save Time - Improve Your Life - Join Presari

With a Presari membership you can modify the keywords right from the Presari pages in this guide.

Memberships come with a dozen pre-loaded presets, which are search dashboards where the search engines have been pre-selected by topic. They cover things like Hiking and Travel, Fitness, Lifestyle, Health, Business, Money, Jobs, Marketing, Science, Technology, Legal, Shopping and more.

You can tailor and customize your own search dashboards, organize and save your keywords as favorites, use a vast library of keywords by topic, and share and post Presari pages by email and social media to help others.

For more information visit www.Presari.com

Statewide Perspective

[National Parks in Oregon](#)

[National Forests in Oregon](#)

[National Wilderness Areas in Oregon](#)

[National Wilderness Study Area in Oregon](#)

[National Outstanding Natural Areas in Oregon](#)

[National Scenic Highways in Oregon](#)

[National Historical Parks and Historic Sites in Oregon](#)

[National Historic Trails in Oregon](#)

[National Scenic Trails in Oregon](#)

[National Wild & Scenic Rivers in Oregon](#)

[National Wildlife Refuges in Oregon](#)

[State Parks in Oregon](#)

[State Forests in Oregon](#)

[State Fish Hatcheries in Oregon](#)

[State Scenic Viewpoints in Oregon](#)

[State Scenic Corridors in Oregon](#)

[State Recreation Sites in Oregon](#)

[State Recreation Areas in Oregon](#)

[State Natural Areas in Oregon](#)

[Waysides in Oregon](#)

[Scenic Viewpoints in Oregon](#)

[State Natural Sites in Oregon](#)

[Interpretive Centers in Oregon](#)

[Guided Ocean Viewpoints in Oregon](#)

[Beach Access in Oregon](#)

[Cities in Oregon](#)

[County Parks in Oregon](#)

[Snowshoeing in Oregon](#)

[Cross Country Skiing in Oregon](#)

[Hiking Clubs in Oregon](#)

[ADA Accessible in Oregon](#)

[CalTopo in Oregon](#)

Northern Coast

National Forests

[Siuslaw National Forest Hiking Trails](#)

National Wilderness Areas

[Cummins Creek Wilderness Area Hiking Trails](#)

[Drift Creek Wilderness Area Hiking Trails](#)

[Rock Creek Wilderness Area Hiking Trails](#)

National Outstanding Natural Areas

[Valley of the Giants Outstanding Natural Areas Hiking Trails](#)

[Yaquina Head Outstanding Natural Areas Hiking Trails](#)

National Scenic Highways

[Pacific Coast Scenic Byway](#)

National Historical Parks and Historic Sites

[Lewis and Clark National Historical Park Hiking Trails](#)

National Historic and Scenic Trails Hiking Trails

[Lewis and Clark National Historic Trail Hiking Trails](#)

[Oregon National Historic Trail Hiking Trails](#)

National Wild & Scenic Rivers

[North Fork Smith River Hiking Trails](#)

National Wildlife Refuges

[Cape Meares National Wildlife Refuge Hiking Trails](#)

[Nestucca Bay National Wildlife Refuge Hiking Trails](#)

[Oregon Coast National Wildlife Refuge Hiking Trails Complex](#)

[Siletz Bay National Wildlife Refuge Hiking Trails](#)

[Three Arch Rocks National Wildlife Refuge Hiking Trails](#)

State Parks

North

[Bob Straub State Park Hiking Trails](#)

[Cape Lookout State Park Hiking Trails](#)

[Ecola State Park Hiking Trails](#)

[Fort Stevens State Park Hiking Trails](#)

[Nehalem Bay State Park Hiking Trails](#)

[Oswald West State Park Hiking Trails](#)

Central

[Beaver Creek State Natural Area Hiking Trails](#)

[Beverly Beach State Park Hiking Trails](#)

[Carl G. Washburne Memorial State Park Hiking Trails](#)

[Ona Beach State Park Hiking Trails](#)

[South Beach State Park Hiking Trails](#)

State Forests

[McDonald State Forest Hiking Trails](#)

[Tillamook State Forest Hiking Trails](#)

State Fish Hatcheries

[Elk River State Fish Hatchery](#)

[Fall Creek State Fish Hatchery](#)

[Roaring River State Fish Hatchery](#)

[Trask River State Fish Hatchery](#)

Scenic Viewpoints

[Bradley State Scenic Viewpoint Hiking Trails](#)

[Cape Meares State Scenic Viewpoint Hiking Trails](#)

Scenic Corridor

[H. B. Van Duzer Forest State Scenic Corridor Hiking Trails](#)

Recreation Site

[Arcadia Beach State Recreation Site Hiking Trails](#)

[D River State Recreation Site Hiking Trails](#)

[Del Rey Beach State Recreation Site Hiking Trails](#)

[Hug Point State Recreation Site Hiking Trails](#)

[Manhattan Beach State Recreation Site Hiking Trails](#)

[Neskowin Beach State Recreation Site Hiking Trails](#)

[Oceanside Beach State Recreation Site Hiking Trails](#)

[Roads End State Recreation Site Hiking Trails](#)

[Sunset Beach State Recreation Site Hiking Trails](#)

[Tolovana Beach State Recreation Site Hiking Trails](#)

Recreation Area

[Devils Lake State Recreation Area Hiking Trails](#)

[Munson Creek Falls State Natural Site Hiking Trails](#)

[Sitka Sedge State Natural Area Hiking Trails](#)

Natural Area

[Cape Kiwanda State Natural Area Hiking Trails](#)

[Clay Myers State Natural Area at Whalen Island Hiking Trails](#)

[Saddle Mountain State Natural Area Hiking Trails](#)

Wayside

[Ellmaker State Wayside Hiking Trails](#)

Scenic Viewpoint

[Boiler Bay State Scenic Viewpoint Hiking Trails](#)

[Heceta Head Lighthouse State Scenic Viewpoint Hiking Trails](#)

[Muriel O. Ponsler Memorial State Scenic Viewpoint Hiking Trails](#)

[Neptune State Scenic Viewpoint Hiking Trails](#)

[Otter Crest State Scenic Viewpoint Hiking Trails](#)

[Rocky Creek State Scenic Viewpoint Hiking Trails](#)

Recreation Site

[Agate Beach State Recreation Site Hiking Trails](#)

[Beachside State Recreation Site Hiking Trails](#)

[Driftwood Beach State Recreation Site Hiking Trails](#)

[Governor Patterson Memorial State Recreation Site Hiking Trails](#)

[Lost Creek State Recreation Site Hiking Trails](#)

[Seal Rock State Recreation Site Hiking Trails](#)

[Smelt Sands State Recreation Site Hiking Trails](#)

[Stonefield Beach State Recreation Site Hiking Trails](#)

[W. B. Nelson State Recreation Site Hiking Trails](#)

[Yaquina Bay State Recreation Site Hiking Trails](#)

Recreation Area

[Fogarty Creek State Recreation Area Hiking Trails](#)

[Gleneden Beach State Recreation Site Hiking Trails](#)

[Yachats State Recreation Area Hiking Trails](#)

Natural Sites

[Darlingtonia State Natural Site Hiking Trails](#)

[Tokatee Kloutchman State Natural Site Hiking Trails](#)

[Yachats Ocean Road State Natural Site Hiking Trails](#)

[Devils Punch Bowl State Natural Area Hiking Trails](#)

Interpretive Center

[Alsea Bay Historic Interpretive Center Hiking Trails](#)

Guided ocean Viewpoint

[Whale Watching Center Hiking Trails](#)

Beach Access

[South Jetty \(South Beach\) Hiking Trails](#)

Cities

[Hiking Trails near Astoria OR](#)

[Hiking Trails near Tillamook OR](#)

[Hiking Trails near Pacific City OR](#)

[Hiking Trails near Lincoln City OR](#)

[Hiking Trails near Newport OR](#)

[Hiking Trails near Florence OR](#)

County Parks

[County Parks in Clatsop County OR](#)

[County Parks in Tillamook County OR](#)

[County Parks in Lincoln County OR](#)

Snowshoeing

[Snowshoeing near Astoria OR](#)

[Snowshoeing near Tillamook OR](#)

[Snowshoeing near Pacific City OR](#)

[Snowshoeing near Lincoln City OR](#)

[Snowshoeing near Newport OR](#)

[Snowshoeing near Florence OR](#)

Cross Country Skiing

[Cross Country Skiing near Astoria OR](#)

[Cross Country Skiing near Tillamook OR](#)

[Cross Country Skiing near Pacific City OR](#)

[Cross Country Skiing near Lincoln City OR](#)

[Cross Country Skiing near Newport OR](#)

[Cross Country Skiing near Florence OR](#)

Hiking Clubs

[Hiking Clubs near Astoria OR](#)

[Hiking Clubs near Tillamook OR](#)

[Hiking Clubs near Pacific City OR](#)

[Hiking Clubs near Lincoln City OR](#)

[Hiking Clubs near Newport OR](#)

[Hiking Clubs near Florence OR](#)

Portland

National Forests

[Mount Hood National Forest Hiking Trails](#)

National Wilderness Areas

[Badger Creek Wilderness Area Hiking Trails](#)

[Mill Creek Wilderness Area Hiking Trails](#)

[Mount Hood Wilderness Area Hiking Trails](#)

National Wilderness Study Areas

[Table Rock Wilderness Study Area Hiking Trails](#)

National Scenic Highways

[Historic Columbia River Highway](#)

[Mt. Hood Scenic Byway](#)

National Historical Parks and Historic Sites

[Fort Vancouver Hiking Trails](#)

[Fort Vancouver National Historic Site Hiking Trails](#)

[McLoughlin House Hiking Trails](#)

[Vancouver National Historic Reserve Hiking Trails](#)

National Historic and Scenic Trails Hiking Trails

[Lewis and Clark National Historic Trail Hiking Trails](#)

[Oregon National Historic Trail Hiking Trails](#)

National Wildlife Refuges

[Lewis and Clark National Wildlife Refuge Hiking Trails](#)

[Tualatin River National Wildlife Refuge Hiking Trails](#)

[Wapato Lake National Wildlife Refuge Hiking Trails](#)

National Wild & Scenic Rivers

[Clackamas River Hiking Trails](#)

[Collawash River Hiking Trails](#)

[Roaring River Hiking Trails](#)

[Salmon River Hiking Trails](#)

[Sandy River Hiking Trails](#)

[South Fork Roaring River Hiking Trails](#)

[Zigzag River Hiking Trails](#)

State Park

[Ainsworth State Park Hiking Trails](#)

[Guy W. Talbot State Park Hiking Trails](#)

[L. L. Stub Stewart State Park Hiking Trails](#)

[Milo McIver State Park Hiking Trails](#)

[Molalla River State Park Hiking Trails](#)

[Rooster Rock State Park Hiking Trails](#)

State Forests

[Tillamook State Forest Hiking Trails](#)

State Trail

[Banks–Vernonia State Trail Hiking Trails](#)

[Historic Columbia River Highway State Trail Hiking Trails](#)

Scenic Viewpoint

[Bald Peak State Scenic Viewpoint Hiking Trails](#)

[Bridal Veil Falls State Scenic Viewpoint Hiking Trails](#)

[Portland Women's Forum State Scenic Viewpoint Hiking Trails](#)

Scenic Corridor

[Crown Point State Scenic Corridor Hiking Trails](#)

[John B. Yeon State Scenic Corridor Hiking Trails](#)

[Sheridan State Scenic Corridor Hiking Trails](#)

Recreation Site

[Benson State Recreation Area Hiking Trails](#)

[Bonnie Lure State Recreation Area Hiking Trails](#)

[Dabney State Recreation Area Hiking Trails](#)

[Government Island State Recreation Area Hiking Trails](#)

[Lewis and Clark State Recreation Site Hiking Trails](#)

[Mary S. Young State Recreation Area Hiking Trails](#)

Natural Area

[George W. Joseph State Natural Area Hiking Trails](#)

[Shepperd's Dell State Natural Area Hiking Trails](#)

[Tryon Creek State Natural Area Hiking Trails](#)

Heritage Site

[Willamette Stone State Heritage Site Hiking Trails](#)

Cities

[Hiking Trails near Portland OR](#)

[Hiking Trails near Woodburn OR](#)

County Parks

[County Parks in Multnomah County OR](#)

[County Parks in Columbia County OR](#)

[County Parks in Washington County OR](#)

[County Parks in Clackamas County OR](#)

[County Parks in Yamhill County OR](#)

Snowshoeing

[Snowshoeing near Portland OR](#)

[Snowshoeing near Woodburn OR](#)

[Snowshoeing near Troutdale OR](#)

Cross Country Skiing

[Cross Country Skiing near Portland OR](#)

[Cross Country Skiing near Woodburn OR](#)

[Cross Country Skiing near Troutdale OR](#)

Sno-Parks

[Mt. Hood Sno-Parks](#)

[Mt. Hood Sno-Park](#)

[Timberline Sno-Park](#)

[Glacier View Sno-Park](#)

[Ski Bowl West Sno-Park](#)

[Ski Bowl East Sno-Park](#)

[Mirror Lake Sno-Park](#)

[Summit Ski Area Sno-Park](#)

[Government Camp Sno-Park](#)

[Government Camp Maintenance Station Sno-Park](#)

[Snow Bunny Lodge Sno-Park](#)

[Trillium Lake Sno-Park](#)

[Barlow Pass Sno-Park](#)

[Boy Scout Camp Sno-Park](#)

[White River West Sno-Park](#)

[White River East Sno-Park](#)

[Bennett Pass Sno-Park](#)

[Mt. Hood Meadows Sno-Park](#)

[Hood River Meadows Sno-Park](#)

[Teacup Lake Sno-Park](#)

[Pocket Creek Sno-Park](#)

[Little John Sno-Park](#)

[Cooper Spur Sno-Park](#)

[Frog Lake Sno-Park](#)

[Skyline Road Sno-Park](#)

Hiking Clubs

[Hiking Clubs near Portland OR](#)

[Hiking Clubs near Woodburn OR](#)

[Hiking Clubs near Troutdale OR](#)

Columbia Gorge

National Forests

[Mount Hood National Forest Hiking Trails](#)

National Wilderness Areas

[Badger Creek Wilderness Area Hiking Trails](#)

[Columbia Wilderness Area](#)

[Mount Hood Wilderness Area Hiking Trails](#)

[Salmon-Huckleberry Wilderness Area Hiking Trails](#)

National Wilderness Study Areas

[Lower John Day Wilderness Study Area Hiking Trails](#)

[North Pole Ridge Wilderness Study Area Hiking Trails](#)

[Thirtymile Wilderness Study Area Hiking Trails](#)

National Scenic Highways

[Historic Columbia River Highway](#)

[Mt. Hood Scenic Byway](#)

National Scenic Areas

[Columbia River Gorge National Scenic Area Hiking Trails](#)

National Scenic Trails

[Pacific Crest National Scenic Trail Hiking Trails](#)

National Historic and Scenic Trails Hiking Trails

[Lewis and Clark National Historic Trail Hiking Trails](#)

[Oregon National Historic Trail Hiking Trails](#)

National Wild & Scenic Rivers

[Eagle Creek Hiking Trails](#)

[Fifteenmile Creek Hiking Trails](#)

[Hood River \(East Fork\) Hiking Trails](#)

[Hood River \(Middle Fork\) Hiking Trails](#)

State Trail

[Historic Columbia River Highway State Trail Hiking Trails](#)

State Park

[Ainsworth State Park Hiking Trails](#)

[Guy W. Talbot State Park Hiking Trails](#)

[Mayer State Park Hiking Trails](#)

[Memaloose State Park Hiking Trails](#)

[Rooster Rock State Park Hiking Trails](#)

[Starvation Creek State Park Hiking Trails](#)

[Viento State Park Hiking Trails](#)

[White River Falls State Park Hiking Trails](#)

Scenic Viewpoint

[Bridal Veil Falls State Scenic Viewpoint Hiking Trails](#)

Scenic Corridor

[Crown Point State Scenic Corridor Hiking Trails](#)

[John B. Yeon State Scenic Corridor Hiking Trails](#)

[Sheridan State Scenic Corridor Hiking Trails](#)

Recreation Site

[Lewis and Clark State Recreation Site Hiking Trails](#)

[Benson State Recreation Area Hiking Trails](#)

[Deschutes River State Recreation Area Hiking Trails](#)

[Koberg Beach State Recreation Site Hiking Trails](#)

Natural Areas

[George W. Joseph State Natural Area Hiking Trails](#)

[Seneca Fouts Memorial State Natural Area Hiking Trails](#)

[Shepperd's Dell State Natural Area Hiking Trails](#)

[Vinzenz Lausmann Memorial State Natural Area Hiking Trails](#)

[Wygant State Natural Area Hiking Trails](#)

Boat launch

[Heritage Landing \(Deschutes\) Hiking Trails](#)

Cities

[Hiking Trails in the Columbia Gorge OR](#)

[Hiking Trails near Troutdale OR](#)

[Hiking Trails near North Bonneville OR](#)

[Hiking Trails near Hood River OR](#)

[Hiking Trails near The Dalles OR](#)

[Hiking Trails near Arlington OR](#)

County Parks

[County Parks in Multnomah County OR](#)

[County Parks in Hood River County OR](#)

[County Parks in Clackamas County OR](#)

[County Parks in Wasco County OR](#)

[County Parks in Sherman County OR](#)

[County Parks in Gilliam County OR](#)

Snowshoeing

[Snowshoeing near Columbia Gorge OR](#)

[Snowshoeing near North Bonneville OR](#)

[Snowshoeing near Hood River OR](#)

[Snowshoeing near The Dalles OR](#)

[Snowshoeing near Arlington OR](#)

Cross Country Skiing

[Cross Country Skiing near Columbia Gorge OR](#)

[Cross Country Skiing near North Bonneville OR](#)

[Cross Country Skiing near Hood River OR](#)

[Cross Country Skiing near The Dalles OR](#)

[Cross Country Skiing near Arlington OR](#)

Hiking Clubs

[Hiking Clubs in the Columbia Gorge OR](#)

[Hiking Clubs near North Bonneville OR](#)

[Hiking Clubs near Hood River OR](#)

[Hiking Clubs near The Dalles OR](#)

[Hiking Clubs near Arlington OR](#)

Northeastern

National Forests

[Malheur National Forest Hiking Trails](#)

[Umatilla National Forest Hiking Trails](#)

[Wallowa-Whitman National Forest Hiking Trails](#)

National Wilderness Areas

[Eagle Cap Wilderness Area Hiking Trails](#)

[Hells Canyon Wilderness Area Hiking Trails](#)

[Monument Rock Wilderness Area Hiking Trails](#)

[North Fork John Day Wilderness Area Hiking Trails](#)

[North Fork Umatilla Wilderness Area Hiking Trails](#)

[Wenaha-Tucannon Wilderness Area Hiking Trails](#)

National Wilderness Study Areas

[Homestead Wilderness Study Area Hiking Trails](#)

[Mcgraw Creek Wilderness Study Area Hiking Trails](#)

[Sheep Mountain Wilderness Study Area Hiking Trails](#)

National Recreation Areas

[Hells Canyon National Recreation Area Hiking Trails](#)

National Scenic Highways

[Hells Canyon Scenic Byway](#)

National Historical Parks and Historic Sites

[Nez Perce National Historical Park Hiking Trails](#)

National Historic and Scenic Trails Hiking Trails

[Lewis and Clark National Historic Trail Hiking Trails](#)

[Oregon National Historic Trail Hiking Trails](#)

National Wildlife Refuges

[Cold Springs National Wildlife Refuge Hiking Trails](#)

[Mid-Columbia River National Wildlife Refuge Hiking Trails Complex](#)

[Umatilla National Wildlife Refuge Hiking Trails](#)

National Wild & Scenic Rivers

[Grande Ronde River Hiking Trails](#)

[Imnaha River Hiking Trails](#)

[John Day River Hiking Trails](#)

[Joseph Creek Hiking Trails](#)

[Lostine River Hiking Trails](#)

[Minam River Hiking Trails](#)

[North Fork John Day River Hiking Trails](#)

[North Powder River Hiking Trails](#)

[Powder River Hiking Trails](#)

[Snake River Hiking Trails](#)

[South Fork John Day River Hiking Trails](#)

[Wallowa River Oregon Hiking Trails](#)

[Wenaha River Hiking Trails](#)

State Park

[Bates State Park Hiking Trails](#)

[Catherine Creek State Park Hiking Trails](#)

[Hat Rock State Park Hiking Trails](#)

[Lake Owyhee State Park Hiking Trails](#)

Wayside

[Red Bridge State Wayside Hiking Trails](#)

Scenic Corridor

[Battle Mountain Forest State Scenic Corridor Hiking Trails](#)

[Blue Mountain Forest State Scenic Corridor Hiking Trails](#)

[Ukiah–Dale Forest State Scenic Corridor Hiking Trails](#)

[Unity Forest State Scenic Corridor Hiking Trails](#)

[Wallowa Lake Highway Forest State Scenic Corridor Hiking Trails](#)

Rest Area

[Wallowa River Rest Area Hiking Trails](#)

Recreation Site

[Clyde Holliday State Recreation Site Hiking Trails](#)

[Ontario State Recreation Site Hiking Trails](#)

[Unity Lake State Recreation Site Hiking Trails](#)

Recreation Area

[Farewell Bend State Recreation Area Hiking Trails](#)

[Hilgard Junction State Recreation Area Hiking Trails](#)

[Minam State Recreation Area Hiking Trails](#)

[Wallowa Lake State Recreation Area Hiking Trails](#)

Heritage Site

[Iwetemlaykin State Heritage Site Hiking Trails](#)

[Kam Wah Chung State Heritage Site Hiking Trails](#)

Heritage Area

[Emigrant Springs State Heritage Area Hiking Trails](#)

[Sumpter Valley Dredge State Heritage Area Hiking Trails](#)

Cities

[Hiking Trails near Hermiston OR](#)

[Hiking Trails near Tollgate OR](#)

[Hiking Trails near Milton-Freewater OR](#)

[Hiking Trails near Troy OR](#)

[Hiking Trails near Pendleton OR](#)

[Hiking Trails near La Grande OR](#)

[Hiking Trails near North Powder OR](#)

[Hiking Trails near Baker City OR](#)

[Hiking Trails near Wallowa OR](#)

[Hiking Trails near Joseph OR](#)

[Hiking Trails near Ontario OR](#)

[Hiking Trails near John Day OR](#)

[Hiking Trails near Mitchell OR](#)

County Parks

[County Parks in Morrow County OR](#)

[County Parks in Umatilla County OR](#)

[County Parks in Union County OR](#)

[County Parks in Baker County OR](#)

[County Parks in Wallowa County OR](#)

Snowshoeing

[Snowshoeing near Hermiston OR](#)

[Snowshoeing near Tollgate OR](#)

[Snowshoeing near Milton-Freewater OR](#)

[Snowshoeing near Troy OR](#)

[Snowshoeing near Pendleton OR](#)

[Snowshoeing near La Grande OR](#)

[Snowshoeing near North Powder OR](#)

[Snowshoeing near Baker City OR](#)

[Snowshoeing near Wallowa OR](#)

[Snowshoeing near Joseph OR](#)

[Snowshoeing near Ontario OR](#)

[Snowshoeing near John Day OR](#)

[Snowshoeing near Mitchell OR](#)

Cross Country Skiing

[Cross Country Skiing near Hermiston OR](#)

[Cross Country Skiing near Tollgate OR](#)

[Cross Country Skiing near Milton-Freewater OR](#)

[Cross Country Skiing near Troy OR](#)

[Cross Country Skiing near Pendleton OR](#)

[Cross Country Skiing near La Grande OR](#)

[Cross Country Skiing near North Powder OR](#)

[Cross Country Skiing near Baker City OR](#)

[Cross Country Skiing near Wallowa OR](#)

[Cross Country Skiing near Joseph OR](#)

[Cross Country Skiing near Ontario OR](#)

[Cross Country Skiing near John Day OR](#)

[Cross Country Skiing near Mitchell OR](#)

Sno-Parks

[Northeastern Oregon Sno-Parks](#)

[Anthony Lake Area Sno-Park](#)

[Dixie Mountain Sno-Park](#)

[Starr Ridge Sno-Park](#)

[Idlewild Sno-Park](#)

[Four Corners Sno-Park](#)

[Salt Creek Summit Sno-Park](#)

[Tollgate Sno-Park](#)

[Langdon Lake Sno-Park](#)

[Milepost 20 Sno-Park](#)

[Morning Creek Sno-Park](#)

[Spout Springs Ski Area Sno-Park](#)

[Milepost 22 Sno-Park](#)

[Woodland Sno-Park](#)

[Horseshoe Prairie Road Sno-Park](#)

[Andies Prairie Sno-Park](#)

[Milepost 27 Sno-Park](#)

[Oregon Trail - Blue Mountain Crossing Sno-Park](#)

[Mt. Emily Sno-Park](#)

[Clear Creek Sno-Park](#)

[Ferguson Ridge Sno-Park](#)

[Catherine Creek Sno-Park](#)

[Huddleston Sno-Park](#)

[Blue Mountain Summit Sno-Park](#)

Hiking Clubs

[Hiking Clubs near Hermiston OR](#)

[Hiking Clubs near Tollgate OR](#)

[Hiking Clubs near Milton-Freewater OR](#)

[Hiking Clubs near Troy OR](#)

[Hiking Clubs near Pendleton OR](#)

[Hiking Clubs near La Grande OR](#)

[Hiking Clubs near North Powder OR](#)

[Hiking Clubs near Baker City OR](#)

[Hiking Clubs near Wallowa OR](#)

[Hiking Clubs near Joseph OR](#)

[Hiking Clubs near Ontario OR](#)

[Hiking Clubs near John Day OR](#)

[Hiking Clubs near Mitchell OR](#)

Willamette Valley

National Forests

[Willamette National Forest Hiking Trails](#)

National Wilderness Areas

[Diamond Peak Wilderness Area Hiking Trails](#)

[Menagerie Wilderness Area Hiking Trails](#)

[Middle Santiam Wilderness Area Hiking Trails](#)

National Wilderness Study Areas

[Table Rock Wilderness Study Area Hiking Trails](#)

National Scenic Highways

[McKenzie Pass-Santiam Pass Scenic Byway](#)

[West Cascades Scenic Byway](#)

National Wildlife Refuges

[Ankeny National Wildlife Refuge Hiking Trails](#)

[Baskett Slough National Wildlife Refuge Hiking Trails](#)

[Willamette Valley National Wildlife Refuge Hiking Trails Complex](#)

[William L. Finley National Wildlife Refuge Hiking Trails](#)

National Wild & Scenic Rivers

[Elkhorn Creek Hiking Trails](#)

[McKenzie River Hiking Trails](#)

[North Fork Middle Fork Willamette River Hiking Trails](#)

[Quartzville Creek Hiking Trails](#)

Wayside

[Alderwood State Wayside Hiking Trails](#)

[Holman State Wayside Hiking Trails](#)

[Washburne State Wayside Hiking Trails](#)

State Park

[Cascadia State Park Hiking Trails](#)

[Elijah Bristow State Park Hiking Trails](#)

[Silver Falls State Park Hiking Trails](#)

[State Capitol State Park Hiking Trails](#)

[Willamette Mission State Park Hiking Trails](#)

State Forests

[McDonald State Forest Hiking Trails](#)

[Santiam State Forest Hiking Trails](#)

State Nursery

[Dwight Phipps State Forest Nursery](#)

Rest Area

[Maples Rest Area Hiking Trails](#)

Recreation Site

[Dexter State Recreation Site Hiking Trails](#)

[Fall Creek State Recreation Site Hiking Trails](#)

[Jasper State Recreation Site Hiking Trails](#)

[Lowell State Recreation Site Hiking Trails](#)

[Maud Williamson State Recreation Site Hiking Trails](#)

[Sarah Helmick State Recreation Site Hiking Trails](#)

Recreation Area

[Detroit Lake State Recreation Area Hiking Trails](#)

[North Santiam State Recreation Area Hiking Trails](#)

Natural Site

[Erratic Rock State Natural Site Hiking Trails](#)

State Natural Area Hiking Trails

[Tryon Creek State Natural Area Hiking Trails](#)

Heritage Site

[Thompson's Mills State Heritage Site Hiking Trails](#)

Heritage Area

[Champoeg State Heritage Area Hiking Trails](#)

[Fort Yamhill State Heritage Area Hiking Trails](#)

Boat launch

[Mongold Day-Use Area Hiking Trails](#)

Cities

[Hiking Trails near Salem OR](#)

[Hiking Trails near Corvallis OR](#)

[Hiking Trails near Sweet Home OR](#)

[Hiking Trails near Idanha OR](#)

[Hiking Trails near McKenzie Bridge OR](#)

[Hiking Trails near Eugene OR](#)

County Parks

[County Parks in Yamhill County OR](#)

[County Parks in Clackamas County OR](#)

[County Parks in Polk County OR](#)

[County Parks in Marion County OR](#)

[County Parks in Benton County OR](#)

[County Parks in Linn County OR](#)

Snowshoeing

[Snowshoeing near Salem OR](#)

[Snowshoeing near Corvallis OR](#)

[Snowshoeing near Sweet Home OR](#)

[Snowshoeing near Idanha OR](#)

[Snowshoeing near McKenzie Bridge OR](#)

[Snowshoeing near Eugene OR](#)

Cross Country Skiing

[Cross Country Skiing near Salem OR](#)

[Cross Country Skiing near Corvallis OR](#)

[Cross Country Skiing near Sweet Home OR](#)

[Cross Country Skiing near Idanha OR](#)

[Cross Country Skiing near McKenzie Bridge OR](#)

[Cross Country Skiing near Eugene OR](#)

Sno-Parks

[Santiam Pass Oregon Sno-Parks](#)

[Tombstone Summit Sno-Park](#)

[Lava Lake Sno-Park](#)

[Little Nash Sno-Park](#)

[Maxwell Butte Sno-Park](#)

[Big Springs Sno-Park](#)

[Ikenick Sno-Park](#)

[Potato Hill Sno-Park](#)

[Ray Benson Sno-Park](#)

[Santiam Pass Sno-Park](#)

[Willamette Pass Sno-Parks](#)

[Willamette Pass Sno-Park](#)

[Salt Creek Falls Sno-Park](#)

[Waldo Lake Road Sno-Park](#)

[Gold Lake Road Sno-Park](#)

[Junction Sno-Park](#)

[Crescent Lake Sno-Park](#)

Hiking Clubs

[Hiking Clubs near Salem OR](#)

[Hiking Clubs near Corvallis OR](#)

[Hiking Clubs near Sweet Home OR](#)

[Hiking Clubs near Idanha OR](#)

[Hiking Clubs near McKenzie Bridge OR](#)

[Hiking Clubs near Eugene OR](#)

Central Oregon

National Monuments

[John Day Fossil Beds National Monument Hiking Trails](#)

National Forests

[Deschutes National Forest Hiking Trails](#)

[Malheur National Forest Hiking Trails](#)

[Ochoco National Forest Hiking Trails](#)

National Wilderness Areas

[Black Canyon Wilderness Area Hiking Trails](#)

[Bridge Creek Wilderness Area Hiking trails](#)

[Diamond Peak Wilderness Area Hiking Trails](#)

[Mount Jefferson Wilderness Area Hiking Trails](#)

[Mount Washington Wilderness Area Hiking Trails](#)

[Three Sisters Wilderness Area Hiking Trails](#)

[Waldo Lake Wilderness Area Hiking Trails](#)

National Wilderness Study Areas

[Aldrich Mountain Wilderness Study Area Hiking Trails](#)

[Cougar Well Wilderness Study Area Hiking Trails](#)

[Deschutes Canyon-Steelhead Falls Wilderness Study Area Hiking Trails](#)

[Gerry Mountain Wilderness Study Area Hiking Trails](#)

[Hampton Butte Wilderness Study Area Hiking Trails](#)

[Lower John Day Wilderness Study Area Hiking Trails](#)

[Malheur River-Bluebucket Creek Wilderness Study Area Hiking Trails](#)

[North Fork Wilderness Study Area Hiking Trails](#)

[North Pole Ridge Wilderness Study Area Hiking Trails](#)

[Pats Cabin Wilderness Study Area Hiking Trails](#)

[Sand Hollow Wilderness Study Area Hiking Trails](#)

[South Fork Wilderness Study Area Hiking Trails](#)

[Spring Basin Wilderness Study Area Hiking Trails](#)

[Sutton Mountain Wilderness Study Area Hiking Trails](#)

[Thirtymile Wilderness Study Area Hiking Trails](#)

[Western Juniper Wilderness Study Area Hiking Trails](#)

National Wild & Scenic Rivers

[Big Marsh Creek Hiking Trails](#)

[Crescent Creek Hiking Trails](#)

[Crooked River Oregon](#)

[Deschutes River Hiking Trails](#)

[Imnaha River Hiking Trails](#)

[John Day River Hiking Trails](#)

[Little Deschutes River Hiking Trails](#)

[Metolius River Hiking Trails](#)

[North Fork Crooked River Hiking Trails](#)

[White River Hiking Trails](#)

[Whychus Creek \(formerly Squaw Creek\) Hiking Trails](#)

National Grasslands

[Crooked River National Grassland Hiking Trails](#)

National Scenic Highways

[Cascade Lakes Scenic Byway](#)

National Scenic Trails

[Pacific Crest National Scenic Trail Hiking Trails](#)

State Park

[Cottonwood Canyon State Park Hiking Trails](#)

[La Pine State Park Hiking Trails](#)

[Prineville Reservoir State Park Hiking Trails](#)

[Smith Rock State Park Hiking Trails](#)

[The Cove Palisades State Park Hiking Trails](#)

[Tumalo State Park Hiking Trails](#)

State Fish Hatchery

[Wizard Falls State Fish Hatchery](#)

Scenic Viewpoint

[Cline Falls State Scenic Viewpoint Hiking Trails](#)

[Ochoco State Scenic Viewpoint Hiking Trails](#)

[Peter Skene Ogden State Scenic Viewpoint Hiking Trails](#)

[Pilot Butte State Scenic Viewpoint Hiking Trails](#)

Natural Area

[Fort Rock State Natural Area Hiking Trails](#)

National Historic Landmark

[Fort Rock Cave Hiking Trails](#)

Wayside

[Dyer State Wayside OR Hiking Trails](#)

Cities

[Hiking Trails near Redmond OR](#)

[Hiking Trails near Bend OR](#)

[Hiking Trails near Prineville OR](#)

County Parks

[County Parks in Lane County OR](#)

[County Parks in Douglas County OR](#)

[County Parks in Jefferson County OR](#)

[County Parks in Wheeler County OR](#)

[County Parks in Deschutes County OR](#)

[County Parks in Crook County OR](#)

Snowshoeing

[Snowshoeing near Redmond OR](#)

[Snowshoeing near Bend OR](#)

[Snowshoeing near Prineville OR](#)

Cross Country Skiing

[Cross Country Skiing near Redmond OR](#)

[Cross Country Skiing near Bend OR](#)

[Cross Country Skiing near Prineville OR](#)

Hiking Clubs

[Hiking Clubs near Redmond OR](#)

[Hiking Clubs near Bend OR](#)

[Hiking Clubs near Prineville OR](#)

Sno-Parks

[Central Oregon Sno-Parks](#)

[Sled Hill / Marks Creek Sno-Park](#)

[Bandit Springs Sno-Park](#)

[Ochoco Divide Sno-Park](#)

[Virginia Meissner Sno-Park](#)

[Wanoga Sno-Park](#)

[Swampy Lake Sno-Park](#)

[Vista Butte Sno-Park](#)

[Dutchman Flat Sno-Park](#)

[Kapka Butte Sno-Park](#)

[Edison Butte Sno-Park](#)

[Three Creek Lake Road Sno-Park](#)

[Paulina Lake Sno-Park](#)

[East Lake Sno-Park](#)

[Walt Haring Sno-Park](#)

[Walton Lake Sno-Park](#)

Southern Coast

National Monuments

[Cascade–Siskiyou National Monument Hiking Trails](#)

[Rogue River-Siskiyou National Forest Hiking Trails](#)

National Forest

[Umpqua National Forest Hiking Trails](#)

National Wilderness Areas

[Boulder Creek Wilderness Area Hiking Trails](#)

[Grassy Knob Wilderness Area Hiking Trails](#)

[Wild Rogue Wilderness Area Hiking Trails](#)

National Recreation Areas

[Oregon Dunes National Recreation Area](#)

National Scenic Highways

[Pacific Coast Scenic Byway](#)

National Estuarine Research Reserves

[South Slough National Estuarine Research Reserve Hiking Trails](#)

National Wildlife Refuges

[Bandon Marsh National Wildlife Refuge Hiking Trails](#)

[Oregon Islands National Wildlife Refuge Hiking Trails](#)

National Wild & Scenic Rivers

[Chetco River Hiking Trails](#)

[Elk River Hiking Trails](#)

[River Styx Cave Creek Hiking Trails](#)

[Rogue River Hiking Trails](#)

[Upper Rogue Hiking Trails](#)

State Parks

[Jessie M. Honeyman Memorial State Park Hiking Trails](#)

[Umpqua Lighthouse State Park Hiking Trails](#)

Scenic Corridor

[Bolon Island Tideways State Scenic Corridor Hiking Trails](#)

Wayside

[Hoffman Memorial State Wayside Hiking Trails](#)

State Park

[Alfred A. Loeb State Park Hiking Trails](#)

[Bullards Beach State Park Hiking Trails](#)

[Cape Arago State Park Hiking Trails](#)

[Cape Blanco State Park Hiking Trails](#)

[Humbug Mountain State Park Hiking Trails](#)

[Port Orford Heads State Park Hiking Trails](#)

[Shore Acres State Park Hiking Trails](#)

[Sunset Bay State Park Hiking Trails](#)

[William M. Tugman State Park Hiking Trails](#)

State Fish Hatchery

[Elk River State Fish Hatchery](#)

Scenic Viewpoint

[Face Rock State Scenic Viewpoint Hiking Trails](#)

[Pistol River State Scenic Viewpoint Hiking Trails](#)

Scenic Corridor

[Cape Sebastian State Scenic Corridor Hiking Trails](#)

[Samuel H. Boardman State Scenic Corridor Hiking Trails](#)

[Umpqua State Scenic Corridor Hiking Trails](#)

Recreation Site

[Arizona Beach State Recreation Site Hiking Trails](#)

[Crissey Field State Recreation Site Hiking Trails](#)

[McVay Rock State Recreation Site Hiking Trails](#)

[Otter Point State Recreation Site Hiking Trails](#)

[Paradise Point State Recreation Site Hiking Trails](#)

[Seven Devils State Recreation Site Hiking Trails](#)

[Winchuck State Recreation Site Hiking Trails](#)

[Harris Beach State Recreation Area Hiking Trails](#)

Natural Site

[Coquille Myrtle Grove State Natural Site Hiking Trails](#)

Natural Area

[Bandon State Natural Area Hiking Trails](#)

[Golden and Silver Falls State Natural Area Hiking Trails](#)

[Geisel Monument State Heritage Site Hiking Trails](#)

Cities

[Hiking Trails near Reedsport OR](#)

[Hiking Trails near Coos Bay OR](#)

[Hiking Trails near Bandon OR](#)

[Hiking Trails near Port Orford OR](#)

[Hiking Trails near Gold Beach OR](#)

[Hiking Trails near Brookings OR](#)

County Parks

[County Parks in Lane County OR](#)

[County Parks in Douglas County OR](#)

[County Parks in Coos County OR](#)

Snowshoeing

[Snowshoeing near Reedsport OR](#)

[Snowshoeing near Coos Bay OR](#)

[Snowshoeing near Bandon OR](#)

[Snowshoeing near Port Orford OR](#)

[Snowshoeing near Gold Beach OR](#)

[Snowshoeing near Brookings OR](#)

Cross Country Skiing

[Cross Country Skiing near Reedsport OR](#)

[Cross Country Skiing near Coos Bay OR](#)

[Cross Country Skiing near Bandon OR](#)

[Cross Country Skiing near Port Orford OR](#)

[Cross Country Skiing near Gold Beach OR](#)

[Cross Country Skiing near Brookings OR](#)

Hiking Clubs

[Hiking Clubs near Reedsport OR](#)

[Hiking Clubs near Coos Bay OR](#)

[Hiking Clubs near Bandon OR](#)

[Hiking Clubs near Port Orford OR](#)

[Hiking Clubs near Gold Beach OR](#)

[Hiking Clubs near Brookings OR](#)

Southern Oregon

National Parks

[Crater Lake National Park Hiking Trails](#)

National Monuments

[Cascade–Siskiyou National Monument Hiking Trails](#)

[Newberry Volcanic National Monument Hiking Trails](#)

[Oregon Caves National Monument Hiking Trails](#)

National Wilderness Areas

[Kalmiopsis Wilderness Area Hiking Trails](#)

[Rogue-Umpqua Divide Wilderness Area Hiking Trails](#)

[Wild Rogue Wilderness Area Hiking Trails](#)

National Scenic Highways

[Rogue-Umpqua Scenic Byway](#)

[Volcanic Legacy Scenic Byway](#)

National Scenic Trails

[Pacific Crest National Scenic Trail Hiking Trails](#)

National Wild & Scenic Rivers

[Illinois River Hiking Trails](#)

[North Umpqua River Hiking Trails](#)

Wayside

[Chandler State Wayside Hiking Trails](#)

[Tub Springs State Wayside Hiking Trails](#)

State Park

[Collier Memorial State Park Hiking Trails](#)

[Illinois River Forks State Park Hiking Trails](#)

State Fish Hatchery

[Klamath State Fish Hatchery](#)

State Trail

[OCE Woods Line State Trail Hiking Trails](#)

Scenic Viewpoint

[Prospect State Scenic Viewpoint Hiking Trails](#)

Scenic Corridor

[Booth State Scenic Corridor Hiking Trails](#)

Recreation Site

[Casey State Recreation Site Hiking Trails](#)

[Jackson F. Kimball State Recreation Site Hiking Trails](#)

[TouVelle State Recreation Site Hiking Trails](#)

Recreation Area

[Goose Lake State Recreation Area Hiking Trails](#)

[Joseph H. Stewart State Recreation Area Hiking Trails](#)

[Valley of the Rogue State Recreation Area Hiking Trails](#)

Heritage Site

[Golden State Heritage Site Hiking Trails](#)

[Wolf Creek Inn State Heritage Site Hiking Trails](#)

Cities

[Hiking Trails near Roseburg OR](#)

[Hiking Trails near Grants Pass OR](#)

[Hiking Trails near Medford OR](#)

[Hiking Trails near Ashland OR](#)

[Hiking Trails near Siskiyou OR](#)

[Hiking Trails near Klamath Falls OR](#)

County Parks

[County Parks in Curry County OR](#)

[County Parks in Douglas County OR](#)

[County Parks in Josephine County OR](#)

[County Parks in Jackson County OR](#)

[County Parks in Klamath County OR](#)

Snowshoeing

[Snowshoeing near Roseburg OR](#)

[Snowshoeing near Grants Pass OR](#)

[Snowshoeing near Medford OR](#)

[Snowshoeing near Ashland OR](#)

[Snowshoeing near Siskiyou OR](#)

[Snowshoeing near Klamath Falls OR](#)

Cross Country Skiing

[Cross Country Skiing near Roseburg OR](#)

[Cross Country Skiing near Grants Pass OR](#)

[Cross Country Skiing near Medford OR](#)

[Cross Country Skiing near Ashland OR](#)

[Cross Country Skiing near Siskiyou OR](#)

[Cross Country Skiing near Klamath Falls OR](#)

Sno-Parks

[Crater Lake Sno-Parks](#)

[Mt. Thielsen Sno-Park](#)

[Cinnamon Butte Sno-Park](#)

[North Crater Lake Sno-Park](#)

[South Diamond Sno-Park](#)

[Three Lakes \(West Diamond Lake\) Sno-Park](#)

[Claude Lewis Trailhead Sno-Park](#)

[Farewell Bend Sno-Park](#)

[Union Creek Sno-Park](#)

[Thousand Springs Sno-Park](#)

[Annie Creek Sno-Park](#)

[Lake of the Woods/Siskiyou Summit Sno-Parks](#)

[Summer Homes Sno-Park](#)

[Fish Lake Sno-Park](#)

[Lake of the Woods Summit Sno-Park](#)

[Ichabod Spring Sno-Park](#)

[Four Mile Lake Road Sno-Park](#)

[Rainbow Bay Sno-Park](#)

[Great Meadows Sno-Park](#)

[Dead Indian Sno-Park](#)

[Buck Prairie Sno-Park](#)

[Big Elk Sno-Park](#)

[Mt. Ashland Sno-Park](#)

[Page Mountain Sno-Park](#)

Hiking Clubs

[Hiking Clubs near Roseburg OR](#)

[Hiking Clubs near Grants Pass OR](#)

[Hiking Clubs near Medford OR](#)

[Hiking Clubs near Ashland OR](#)

[Hiking Clubs near Siskiyou OR](#)

[Hiking Clubs near Klamath Falls OR](#)

South Central/Southeastern

National Forests

[Fremont-Winema National Forest Hiking Trails](#)

[Klamath National Forest Hiking Trails](#)

[Umpqua National Forest Hiking Trails](#)

National Wilderness Areas

[Boulder Creek Wilderness Area Hiking Trails](#)

[Gearhart Mountain Wilderness Area Hiking Trails](#)

[Mount Thielsen Wilderness Area Hiking Trails](#)

[Mountain Lakes Wilderness Area Hiking Trails](#)

[Red Buttes Wilderness Area Hiking Trails](#)

[Sky Lakes Wilderness Area Hiking Trails](#)

[Strawberry Mountain Wilderness Area Hiking Trails](#)

National Wilderness Study Areas

[Abert Rim Wilderness Study Area Hiking Trails](#)

[Alvord Desert Wilderness Study Area Hiking Trails](#)

[Basque Hills Wilderness Study Area Hiking Trails](#)

[Beaver Dam Creek Wilderness Study Area Hiking Trails](#)

[Blitzen River Wilderness Study Area Hiking Trails](#)

[Blue Canyon Wilderness Study Area Hiking Trails](#)

[Blue Canyon Add-on Wilderness Study Area Hiking Trails](#)

[Bowden Hills Wilderness Study Area Hiking Trails](#)

[Brewer Spruce Wilderness Study Area Hiking Trails](#)

[Bridge Creek Wilderness Study Area Hiking Trails](#)

[Camp Creek Wilderness Study Area Hiking Trails](#)

[Castle Rock Wilderness Study Area Hiking Trails](#)

[Cedar Mountain Wilderness Study Area Hiking Trails](#)

[Clarks Butte Wilderness Study Area Hiking Trails](#)

[Cottonwood Creek Wilderness Study Area Hiking Trails](#)

[Devils Garden Lava Bed Wilderness Study Area Hiking Trails](#)

[Diablo Mountain Wilderness Study Area Hiking Trails](#)

[Disaster Peak Wilderness Study Area Hiking Trails](#)

[Douglas-Fir Wilderness Study Area Hiking Trails](#)

[Dry Creek Wilderness Study Area Hiking Trails](#)

[Dry Creek Buttes Wilderness Study Area Hiking Trails](#)

[East Alvord Wilderness Study Area Hiking Trails](#)

[Fifteenmile Creek Wilderness Study Area Hiking Trails](#)

[Fish Creek Rim Wilderness Study Area Hiking Trails](#)

[Four Craters Lava Bed Wilderness Study Area Hiking Trails](#)

[Gold Creek Wilderness Study Area Hiking Trails](#)

[Guano Creek Wilderness Study Area Hiking Trails](#)

[Hawk Mountain Wilderness Study Area Hiking Trails](#)

[Heath Lake Wilderness Study Area Hiking Trails](#)

[High Steens Wilderness Study Area Hiking Trails](#)

[Home Creek Wilderness Study Area Hiking Trails](#)

[Honeycombs Wilderness Study Area Hiking Trails](#)

[Indian Creek Wilderness Study Area Hiking Trails](#)

[Jordan Craters Wilderness Study Area Hiking Trails](#)

[Little Sink Wilderness Study Area Hiking Trails](#)

[Lookout Butte Wilderness Study Area Hiking Trails](#)

[Lost Forest Wilderness Study Area Hiking Trails](#)

[Lower Owyhee Canyon Wilderness Study Area Hiking Trails](#)

[Lower Stonehouse Wilderness Study Area Hiking Trails](#)

[Mahogany Ridge Wilderness Study Area Hiking Trails](#)

[Malheur River-Bluebucket Creek Wilderness Study Area Hiking Trails](#)

[Mountain Lakes Wilderness Study Area Hiking Trails](#)

[Oregon Canyon Wilderness Study Area Hiking Trails](#)

[Orejana Canyon Wilderness Study Area Hiking Trails](#)

[Owyhee Breaks Wilderness Study Area Hiking Trails](#)

[Owyhee River Canyon Wilderness Study Area Hiking Trails](#)

[Palomino Hills Wilderness Study Area Hiking Trails](#)

[Pine Creek Wilderness Study Area Hiking Trails](#)

[Pueblo Mountains Wilderness Study Area Hiking Trails](#)

[Red Mountain Wilderness Study Area Hiking Trails](#)

[Rincon Wilderness Study Area Hiking Trails](#)

[Saddle Butte Wilderness Study Area Hiking Trails](#)

[Sage Hen Hills Wilderness Study Area Hiking Trails](#)

[Sand Dunes Wilderness Study Area Hiking Trails](#)

[Sheep Gulch Wilderness Study Area Hiking Trails](#)

[Sheepshead Mountains Wilderness Study Area Hiking Trails](#)

[Slocum Creek Wilderness Study Area Hiking Trails](#)

[South Fork Donner and Blitzen Wilderness Study Area Hiking Trails](#)

[Spaulding Wilderness Study Area Hiking Trails](#)

[Sperry Creek Wilderness Study Area Hiking Trails](#)

[Squaw Ridge Lava Bed Wilderness Study Area Hiking Trails](#)

[Stonehouse Wilderness Study Area Hiking Trails](#)

[Table Mountain Wilderness Study Area Hiking Trails](#)

[Twelvemile Creek Wilderness Study Area Hiking Trails](#)

[Upper Leslie Gulch Wilderness Study Area Hiking Trails](#)

[Upper West Little Owyhee Wilderness Study Area Hiking Trails](#)

[West Peak Wilderness Study Area Hiking Trails](#)

[Wild Horse Basin Wilderness Study Area Hiking Trails](#)

[Wildcat Canyon Wilderness Study Area Hiking Trails](#)

[Willow Creek Wilderness Study Area Hiking Trails](#)

[Winter Range Wilderness Study Area Hiking Trails](#)

National Outstanding Natural Areas

[Diamond Craters Outstanding Natural Areas Hiking Trails](#)

National Scenic Highways

[Outback Scenic Byway](#)

National Scenic Trails

[Pacific Crest National Scenic Trail Hiking Trails](#)

National Wildlife Refuges

[Bear Valley National Wildlife Refuge Hiking Trails](#)

[Hart Mountain National Wildlife Refuge Hiking Trails](#)

[Klamath Basin National Wildlife Refuge Hiking Trails Complex](#)

[Klamath Marsh National Wildlife Refuge Hiking Trails](#)

[Malheur National Wildlife Refuge Hiking Trails](#)

[McKay Creek National Wildlife Refuge Hiking Trails](#)

[Sheldon-Hart Mountain National Wildlife Refuge Hiking Trails Complex](#)

[Upper Klamath National Wildlife Refuge Hiking Trails](#)

National Recreation Areas

[Hells Canyon National Recreation Area Hiking Trails](#)

[Oregon Dunes National Recreation Area](#)

National Wild & Scenic Rivers

[Donner und Blitzen River Hiking Trails](#)

[Fish Creek Hiking Trails](#)

[Kiger Creek Hiking Trails](#)

[Klamath River Oregon Hiking Trails](#)

[Little Wildhorse Creek Hiking Trails](#)

[Malheur River Hiking Trails](#)

[North Fork Malheur River Hiking Trails](#)

[North Fork Owyhee River Hiking Trails](#)

[North Fork Sprague River Hiking Trails](#)

[Owyhee River Hiking Trails](#)

[Sycan River Hiking Trails](#)

[West Little Owyhee River Hiking Trails](#)

[Wildhorse Creek Hiking Trails](#)

Natural Area

[Succor Creek State Natural Area Hiking Trails](#)

Heritage Site

[Frenchglen Hotel State Heritage Site Hiking Trails](#)

[Pete French Round Barn State Heritage Site Hiking Trails](#)

Cities

[Hiking Trails near Burns OR](#)

[Hiking Trails near Lakeview OR](#)

[Hiking Trails near Jordan Valley OR](#)

[Hiking Trails near French Glen OR](#)

County Parks

[County Parks in Lake County OR](#)

[County Parks in Harney County OR](#)

[County Parks in Malheur County OR](#)

Snowshoeing

[Snowshoeing near Burns OR](#)

[Snowshoeing near Lakeview OR](#)

[Snowshoeing near Jordan Valley OR](#)

[Snowshoeing near French Glen OR](#)

Cross Country Skiing

[Cross Country Skiing near Burns OR](#)

[Cross Country Skiing near Lakeview OR](#)

[Cross Country Skiing near Jordan Valley OR](#)

[Cross Country Skiing near French Glen OR](#)

Sno-Parks

[Southeastern Oregon Sno-Parks](#)

[Quartz Mountain Sno-Park](#)

[Warner Mountain Ski Area Sno-Park](#)

[Camas Sno-Park](#)

Hiking Clubs

[Hiking Clubs near Burns OR](#)

[Hiking Clubs near Lakeview OR](#)

[Hiking Clubs near Jordan Valley OR](#)

[Hiking Clubs near French Glen OR](#)

ADA Accessible

[ADA Accessible Parks Oregon](#)

[Wheelchair Accessible Trails Oregon](#)

[Wheelchair Accessible Camping Oregon](#)

[Wheelchair Accessible Fishing Oregon](#)

Hiking Clubs and Organizations

[Hiking Clubs in Oregon](#)

[Hiking Organizations in Oregon](#)

CalTopo Maps

Oregon

How Presari Was Created

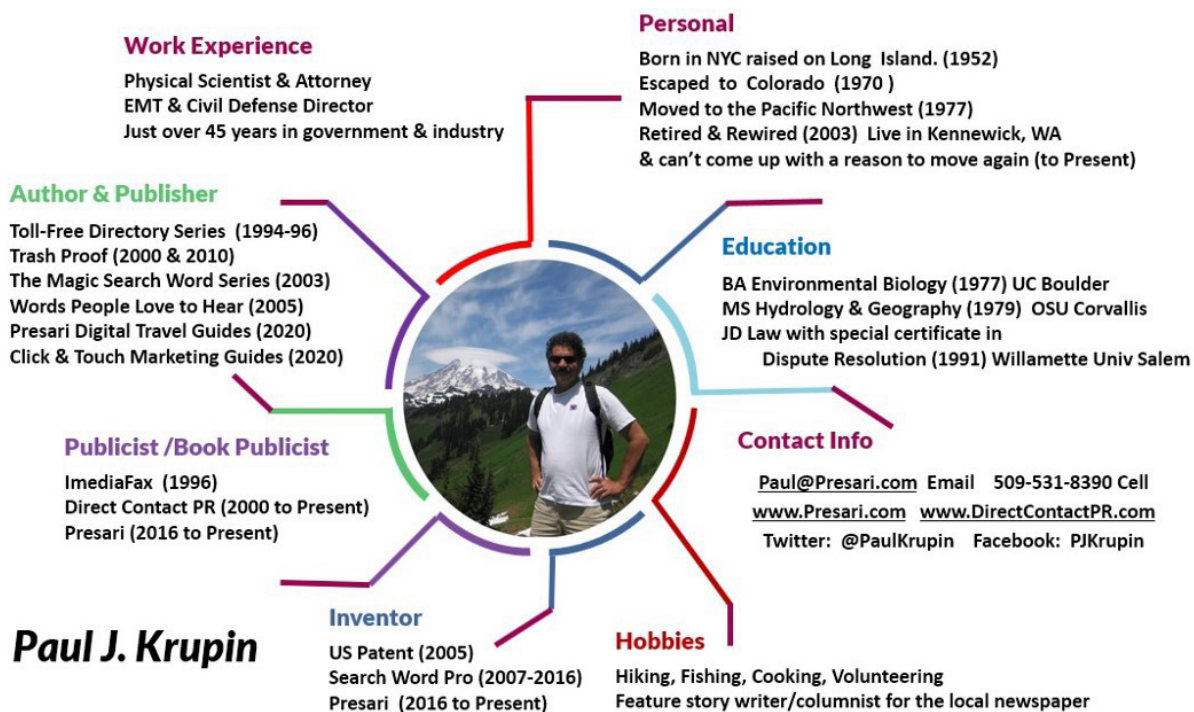
Paul J. Krupin was born in New York City and raised in Franklin Square on Long Island. His grandparents owned a toy store called Sokol's on Steinway Street in Astoria.

He was introduced to the joys of the outdoors as a child. His parents were active members of the Quackpots - a local chapter of a family RV camping group that was part of the National Camping and Hiker's Association. Quackpots stood for Long Island Ducks and Potatoes.



He retired after 28 years of diverse professional government and industry experience in a variety of technology and project management disciplines at complex industrial, nuclear, waste management

facilities. He worked as a hydrologist, environmental protection specialist and attorney for the State of Oregon, U.S. Department of Interior, U.S. Department of Agriculture, U.S. Department of Energy, state, county and local agencies, professional organizations, and private industry. He was an emergency medical technician (EMT) and a County Civil Defense Director in Idaho.

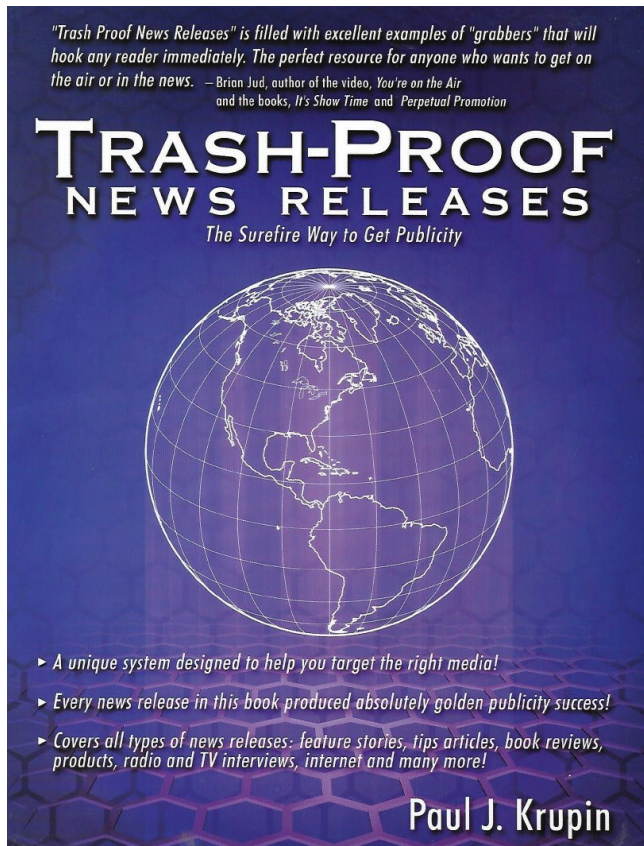


He created his first web site in 1993 after a local librarian said she liked his early books and though it would be a good idea to get them on the Internet. He compiled and published what became a widely known media e-mail database called The US All Media E-Mail Directory.

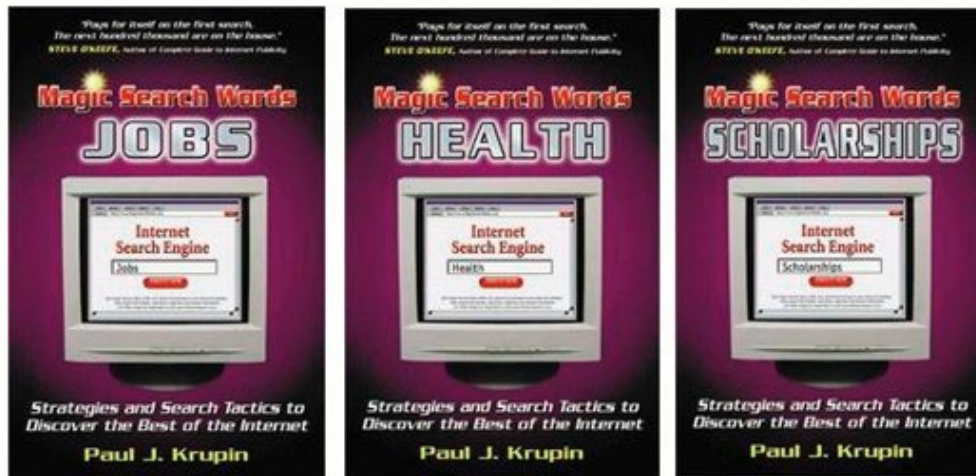
In 1996, he co-created, with Don Short of One World Telecommunications, IMEDIAFAX-The Internet to Media Fax Service a custom programmed online service that allowed people to create their own custom targeted media lists and transmit news releases. Krupin's company, Direct Contact PR, focused on targeted PR using email. His clients included book authors from every genre and creative entrepreneurs of all types.

He got to work with top-tier authors like Jack Canfield and Mark Victor Hansen of Chicken Soup for the Soul, and bestselling authors Dan Brown, Dave Ramsey, Andy Andrews, Brian Tracy Joe Vitale, Zig Ziglar, hundreds of authors and publishing companies, independent films, mobile apps, Internet technology and industry events, hard news journalists to syndicated columnists to electronic newsletters and more.

He captured the best of the publicity techniques he developed and wrote the book *Trash Proof News Releases* (2000 and 2010) which can be downloaded for free here. This book contains lessons learned and techniques for getting media coverage that are still applicable and helpful today.



As a researcher and a publicist, Krupin like millions of others, had become totally enamored with Google. Between 1996 and 2002, he systematically developed rules for finding the best information online. In 2002 he wrote three books – *The Magic Search Word* series (Health, Jobs, and Scholarships), which described how to get the best information on the Internet using search engines.



Each book identified the best words to use to maximize the quality and relevance of the results. If you want to learn the core keyword strategy concepts that resulted in the development of Presari, you can download these books for free [here](#).

In 2003 he teamed up with Don Short (President of One World Telecommunications) and using the rules in the Magic Search Word books, they created the original Search Word Pro web site, an Internet platform that automated the selection of search queries and improved results.



They received a patent in 2005 (U.S. Patent No. US 20030172061 A1 – Method and System for Creating Improved Search Queries). The site opened in 2005 and operated for the next twelve years.

Presari is an evolution of that technology. Between 2014 and 2016, Krupin focused on updating the process they developed to take advantage of the advances in the speed, storage and innovations in telecommunications technology.



He published over 160 Search Word Pro ebooks that search in five series (book marketing, business marketing, health, travel and technology). Each ebook was dedicated to a single topic and with multi-search engine capability built right in. No typing needed. You just pick it and click it. Each book searched just a handful of search engines – Google, Bing, SlideShare, YouTube and Pinterest.



The most common feedback from people was that they wanted to be able to use the technology themselves. Thousands of websites now had their own search engines. So Krupin went back to Short and they decided to try to create something new that allowed people to do whatever they wanted and reach the best sources of knowledge available.

Programming began in earnest in February 2016. Slowly and steadily, over a ten-month period of custom coding and experimentation, the Presari site evolved and took shape. The sites included are

hand-selected based on the quality and quantity of the knowledge they access, documented topical expertise, and highly curated content. often created by authors and expert contributors. They also included social media and news, media and podcasts, and much more. They optimized the site for smart phones so that Presari could be used on any portable or digital device with an Internet connection. It took almost a year and a half.

They turned the site on at 10:28 AM west coast time, at the very peak of the total eclipse of the sun on August 23, 2018.



In June 2019, Krupin utilized Presari to create a travel guide for a group trip to Peru to hike the Inca Trail and visit the Amazon Basin. The utility and usefulness of this white paper report triggered his interest in publishing with Presari.

Over Thanksgiving and Christmas 2019, to help some friends interested in traveling the national parks, he developed and refined the design of a series of Travel ebooks that search using Presari.



In January of 2020, he had just started using Presari to create several series of digital travel guides when the pandemic hit.

In early March, he got diverted when his daughter came home from Seattle and caught covid. He and his wife locked down the house and went into full quarantine. He used Presari to research how to keep people as safe as possible using the best information I could find.

When your home becomes a coronavirus hot spot, hunker down by taking these steps
 BY PAUL KRUPIN SPECIAL TO THE HERALD
 APRIL 05, 2020 02:27 PM

Can masks protect against coronavirus?

Wearing a medical mask can help limit the spread of some respiratory diseases. However, using a mask alone is not guaranteed to stop infections. Their use should be combined with other preventive measures.

<https://www.tri-cityherald.com/news/coronavirus/article241650496.html>

THE Healthy
 MENU EXERCISE NUTRITION MENTAL HEALTH SELF-CARE

HOME > INFECTIOUS DISEASES

How to Manage a Hot Zone in Your Home If Someone Has Covid-19
 Jill Schildhouse
 Updated: Apr. 11, 2020

Experts reveal how to reduce the spread of coronavirus if a family member has **Covid-19 symptoms**.

<https://www.thehealthy.com/infectious-disease/covid-19-infection-hot-zone/>

April 2020

No one else got sick and since he wrote feature stories and columns weekly for the local newspaper, he wrote a series of covid articles including one on How to Operate a Home Hot Zone for the Tri-City Herald which was published in April 2020. This article was published widely across the country and triggered an article and interview with Reader's Digest. Here are the links

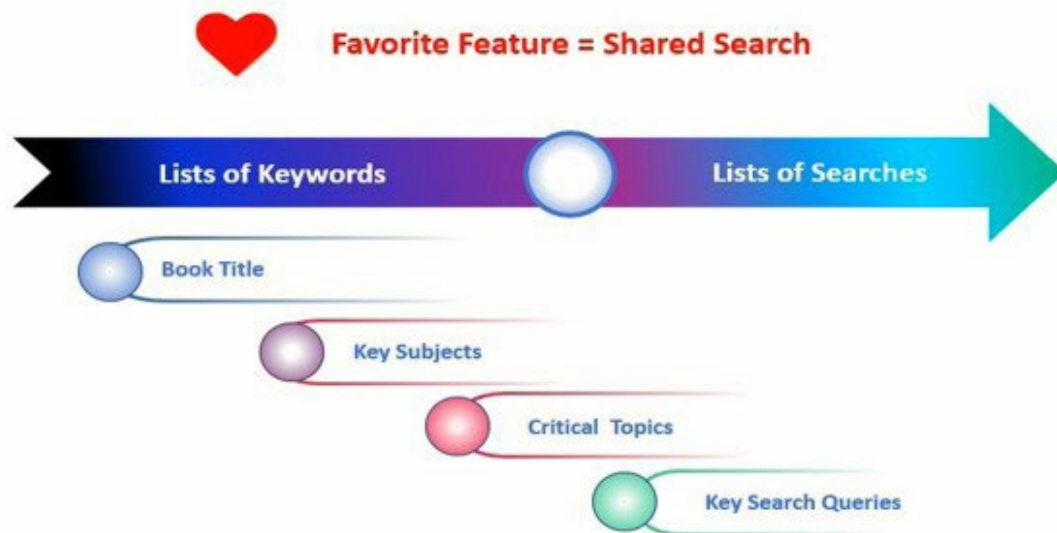
[Home Hot Zone article](https://www.tri-cityherald.com/news/coronavirus/article241650496.html)

[How to Manage a Hot Zone in Your Home If Someone Has Covid-19](https://www.thehealthy.com/infectious-disease/covid-19-infection-hot-zone/)

BTW, you can share these links freely, especially if they are timely and helpful to anyone in need.

The pandemic is forcing everyone to stay at home and work and be really innovative when it comes to making the best use of technology. So Krupin asked his programmer to help him develop the feature that Presari clients loved the most. It is called the Shared Search. Basically, it allows you to do a search for someone, and then deliver them a Presari page that allows them to get the information or results they need or want.

Publishing Technology Innovation



What they did was create a new technology that allow you to go from single keywords to lists of keywords and turn them into lists of searches. These in turn can be published and shared any number of ways.

You know the power of one good search. It can be magic.

Now imagine a comprehensive list of magic search words all focused on one or more really important topics of importance to decision-making, coupled with the ability to search and get the most current information across dozens of carefully selected purpose driven sources, in real time, from anywhere on your computer, your laptop, or your smart phone. This is what Presari does.

This ebook is a digital search guide designed to help you find out everything you need about a destination or location.

Copyright Page

© Copyright 2020 by Paul J. Krupin ALL RIGHTS RESERVED.

No part of this book may be reproduced in any form, or by any method, or stored in an electronic storage system, without the written permission of the publisher, except in the case of brief quotations in critical articles and reviews. Copying any part of this book for any purpose other than your own personal use is a violation of United States copyright law.

If you would like to do any of the above, please seek permission first by contacting us at:

Presari

Kennewick WA Tel: 509-582-5174

Questions and feedback to the author: Paul@Presari.com

Visit the website for further information: www.Presari.com

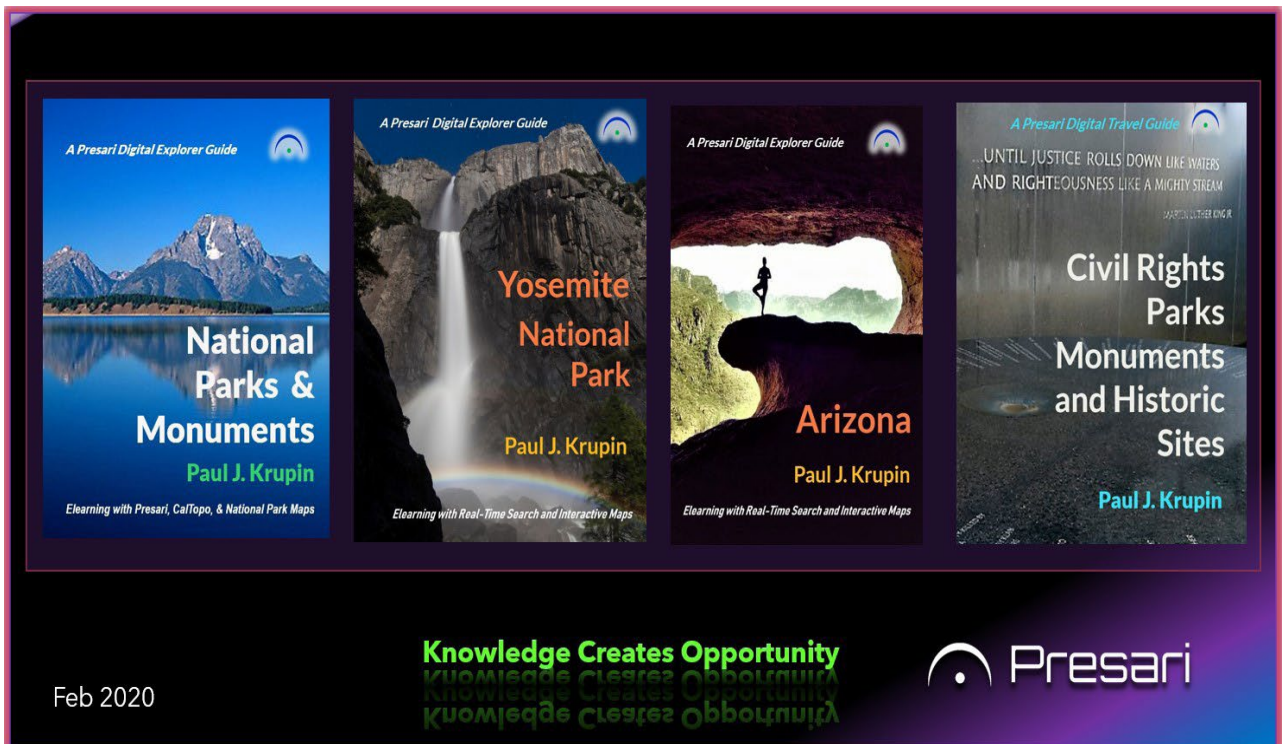
This book is sold as is, without warranty of any kind, either express or implied, respecting the contents of this book, including but not limited to implied warranties for the quality, performance, merchantability, or fitness for any purpose. Neither the author nor the publisher and its dealers or distributors shall be liable to the purchaser, or any other person or entity, with respect to liability, loss, or damage caused or alleged to have been caused directly or indirectly by this book.

Trademark and service mark terms used in this book are the property of the trademark holders. Use of a term in this book should not be regarded as affecting the validity of any trademark or service mark.

Acknowledgements

Special thanks to the Quackpots!

None of this would be possible had my parents Murray and Helene Krupin not instilled a love of the outdoors and taken the family camping when I was a child. They joined the Quackpots and triggered a love of the outdoors and a thirst for knowledge that has carried through to this very day.



I thank and acknowledge everyone who offered their support, interest, advice, enthusiasm, and willingness to help and contribute to me and this project.

Forty years later, I joined another camping group, the the Inter-Mountain Alpine Club (www.imacnw.org) in Tri-Cities. This amazing group, which was started over 75 years ago, continues provide enthusiastic leadership and devotion conserving the wildlands, encouraging people to get involved in hiking, backpacking, snowshoeing and skiing in central and eastern Washington.

In 2017 a small group of the members organized a trip to hike the Inca Trail in Peru. I used Presari to create a searchable itinerary for this trip. It was so helpful that it inspired the development of the Presari Digital Travel Guides. We achieved success and had a wonderful time.



The author coming over Dead Woman's Pass at 13, 846 feet elevation, on the Inca trail in Peru in June 2018.

Thank you all! You're wonderful!

Creating Presari would not have been possible without my many Direct Contact PR clients and colleagues. This is really a tribute to you. It is your creative efforts, the fruits of your labor, and the needs we still have before us that drove the creation of this learning device. I have learned so much by working with you to identify how to help people more, and it is a great pleasure to share with you something that can benefit so many others.

Special thanks to my pre-publication reviewers and editors: Jennette Green, Frank Kresen, Dr. Ken Mask,

Gail Kearns, Sarah Taylor, Bo Rinaldi, L. Diane Wolff, Shel Horowitz, Bonnie Britt, Steven Scott, Brian Schwartz, Susan Wingate, Jennifer 'JJ' Smith, Susan Robinson, Jonathan Bailor, Harry Friebel, Robert Skrob, Jerry D. Simmons, Jacqueline C. Simmonds, Jeff Alt, David FitzSimmons, Paulette Ensign, Lida LoPinto, Dana Lynn

Smith, John Jantsch, Don Short, Joshua Talent, Alexander White, Jamie Davidson, Barry Switzen, Dr. Bob

Rich, Don McBride, Rene Kahle, Carmen Sacco, T. Scott Gross, Ken McGowan, Michelle Orwin, Jim and Lynda

O'Connor, Jamie Saloff, Alan Canton, Gail Kearns, Cynthia Frank, Jeff Alt, Julie Benezet, Andrew Naugher, Mayapriya Long, Kitty Werner, Mitch Yoke, Doug Larimer, Dave Larimer, Katie Krupin, Janet Krupin, Nancy Krupin, Julian Smart, Lynne McDougal, Martin Sefl, and many more.

Special thanks to Laurie Williams and the Tri-City Herald for letting me write the outdoor column these past years. It is so enjoyable to get to write about what you love and share the joys of nature.

Presari evolved over many years. It's amazing to think that this little product helps give people easy access to some of the best and freely available creative work developed by creative people all over the world. But it really does. Sometimes good things really do come in small packages.

To all of you, I stand in admiration and say Bravo! Together may we create and share and help and improve the lives, the minds, bodies, hearts, and souls of people wherever they are found.

To those of you who respond to my posts on the many mailing lists and social media we are on together, thank you. Were it not for your questions, many of the techniques would not have been developed, the answers would have not been researched, and the technology would not have been created. Please keep on asking those questions!

To all you authors, publishers, app developers, inventors, speakers, artists, business people, and other incredibly creative people, thank you for bringing me your creative work and the fruits of your labor and for allowing me the honor to work with you.

To all, remember that human intelligence is needed to channel and focus artificial intelligence wisely.

It is a privilege to assist you and to know you.

Paul J. Krupin

Kennewick, Washington

Please Tell Me What You Think!

Did you like this ebook? Please send me your comments!

If you found this ebook helpful to you, please consider posting a review to Amazon, Apple or Goodreads! I will appreciate it greatly!

If you found some really amazing discoveries using by all means share them with me and let me know about your achievements!

And if you have any ideas or suggestions which can improve this for others, send me your comments. If the book is revised to capture your improvement, I will send you a free revised copy of the book with thanks and an acknowledgement for your contribution.

If you would like me to research a location or create a new ebook on a topic you are interested in, please let me know.

If you are interested in publishing with me or distributing any of these and other titles, please contact me.

Send your comments to me directly anytime at Paul @Presari.com

If you like this ebook, you can do much more by joining [Presari](#).

Presari contains Keyword Helpers that operate improve online research using a restaurant menu approach to keyword selection. You can select any destination for keyword 1 and then select ant trip planning for keyword 2. The keyword helpers include all the National Parks, National Monuments, National Forests, Wilderness Areas, and much more in the US, Canada and many other top destinations.

You can also create and save your own list of destinations and do your own trip planning.

The screenshot displays the Presari web application interface. At the top, there is a navigation bar with 'Home', 'About', and 'Contact' links. Below this is a secondary navigation bar with buttons for 'Pro Search', 'Settings', 'Favorites', 'Sharing', and 'Help'. The main content area features a 'Keyword Helpers' section with a search bar containing 'Yosemite National Park'. A dropdown menu is open, showing a list of search filters and results. The filters include 'National Parks & Monuments Alabama to Florida', 'National Parks & Monuments Georgia to Northern Mar', 'Trip Planning', 'General Search', 'Social Media', and 'Travel'. The results list includes 'Hot Springs National Park', 'Atlantic Ocean National Monuments', 'Northeast Canyons and Seamounts Marine Natior', 'California National Parks', 'Channel Islands National Park', 'Death Valley National Park', 'Joshua Tree National Park', 'Kings Canyon National Park', 'Lassen Volcanic National Park', 'Pinnacles National Park', 'Redwood National Park', 'Sequoia National Park', 'Yosemite National Park', and 'California National Monuments'. A callout box highlights a 'selected term list focused on National Parks & Monuments Alabama to Florida'. A search bar at the bottom right contains 'Travel' and 'AFAR'.

Join Presari and discover what knowledge can do to improve your life.